

Città di Collegno

Provincia di Torino

Piano Regolatore Generale

Sezioni litostratigrafiche

Scale orizzontali 1:10.000, scale verticali 1:1.000


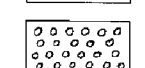
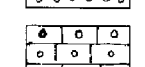
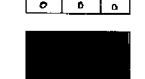
Allegato n. **2 b**

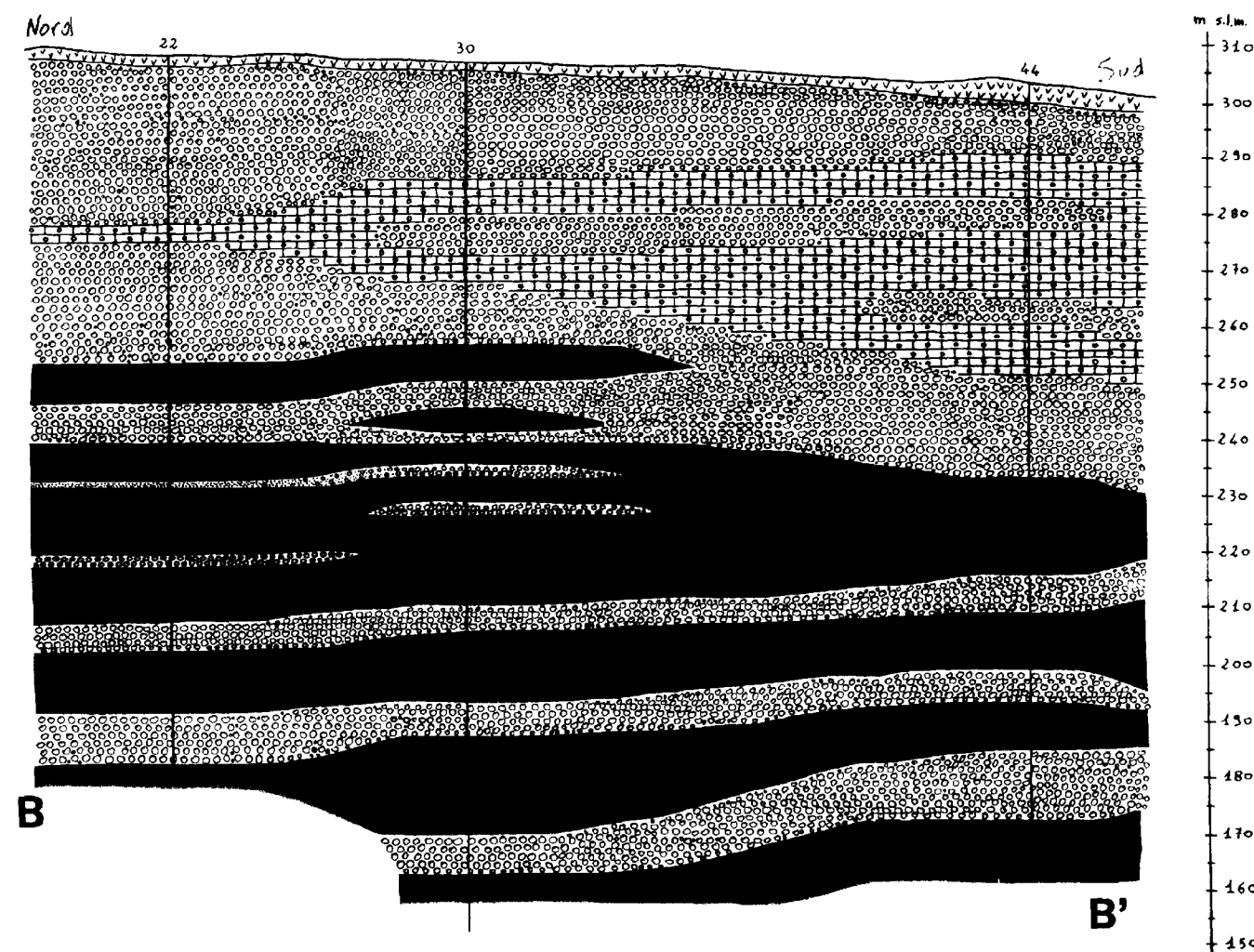
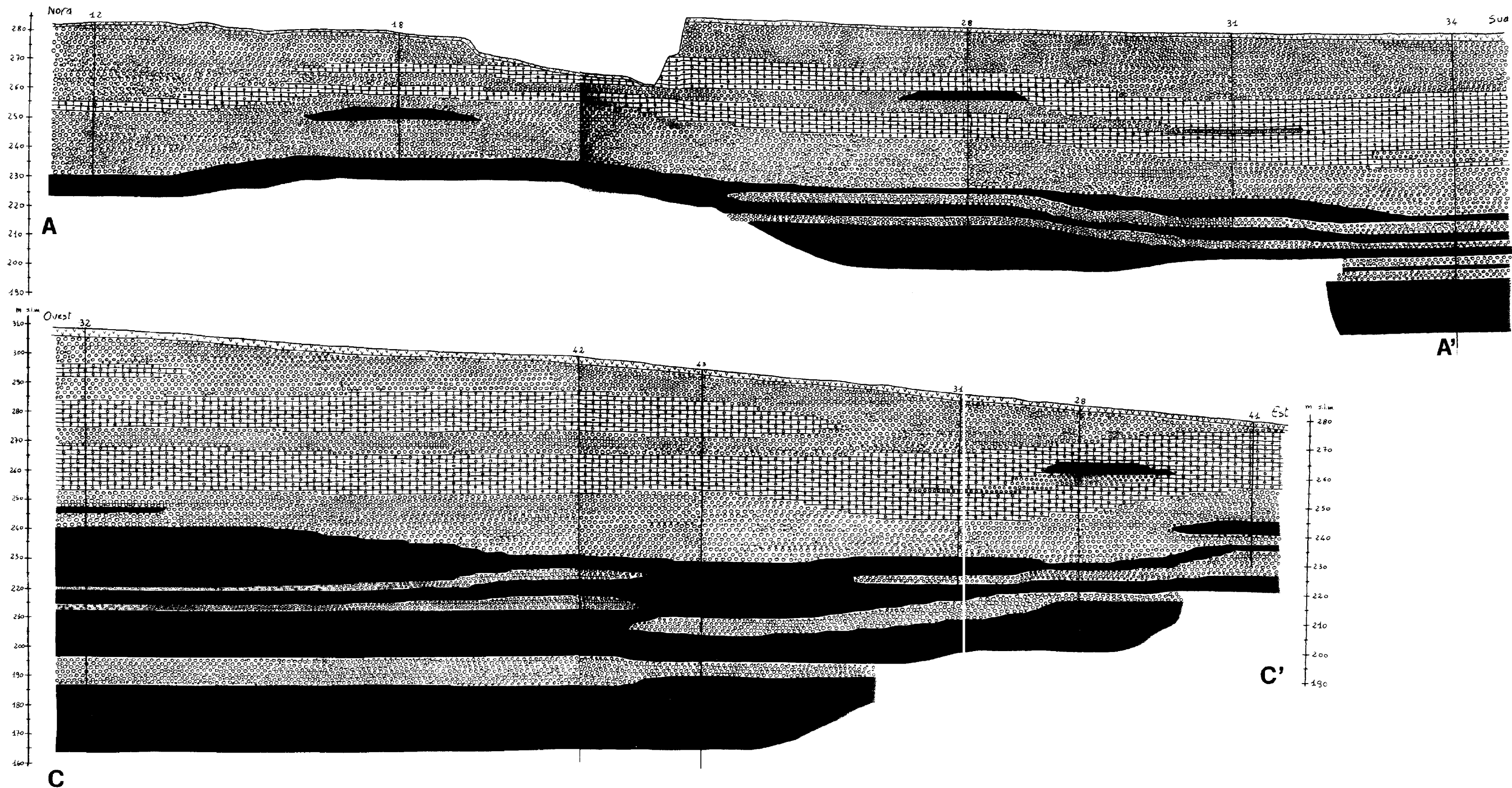
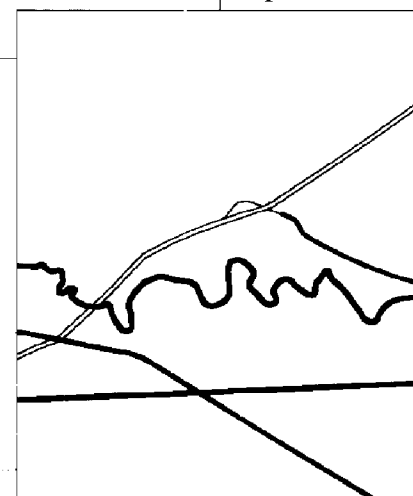
aprile 2002

Il geologo:
Geol. Giuseppe Mandrone

Progetto definitivo controdedotto a seguito
di osservazioni della Regione Piemonte

LEGENDA:

-  terreno agrario
-  sabbia e ghiaia
-  livelli a vario grado di cementazione
-  limi e argille



C

C'

B'